

# Site Assessment Maps

## Site Assessment Maps

**Parcel 090-230-053  
5333 Dry Creek Road, Healdsburg  
Sonoma County, California**

1. 2007 Aerial with Assessor Parcels
2. Soil Units with 2007 Aerial
3. Slope Classification with 2007 Aerial
4. Aspect with 2007 Aerial
5. Unplanted Areas with 2007 Aerial
6. USGS Topographic Quadrangle
7. Viticulture Areas for Parcel

### List of Sources

---

*NOTE: THESE MAPS WERE CREATED BY RAY CARLSON & ASSOCIATES, INC. IN APRIL 2008.*

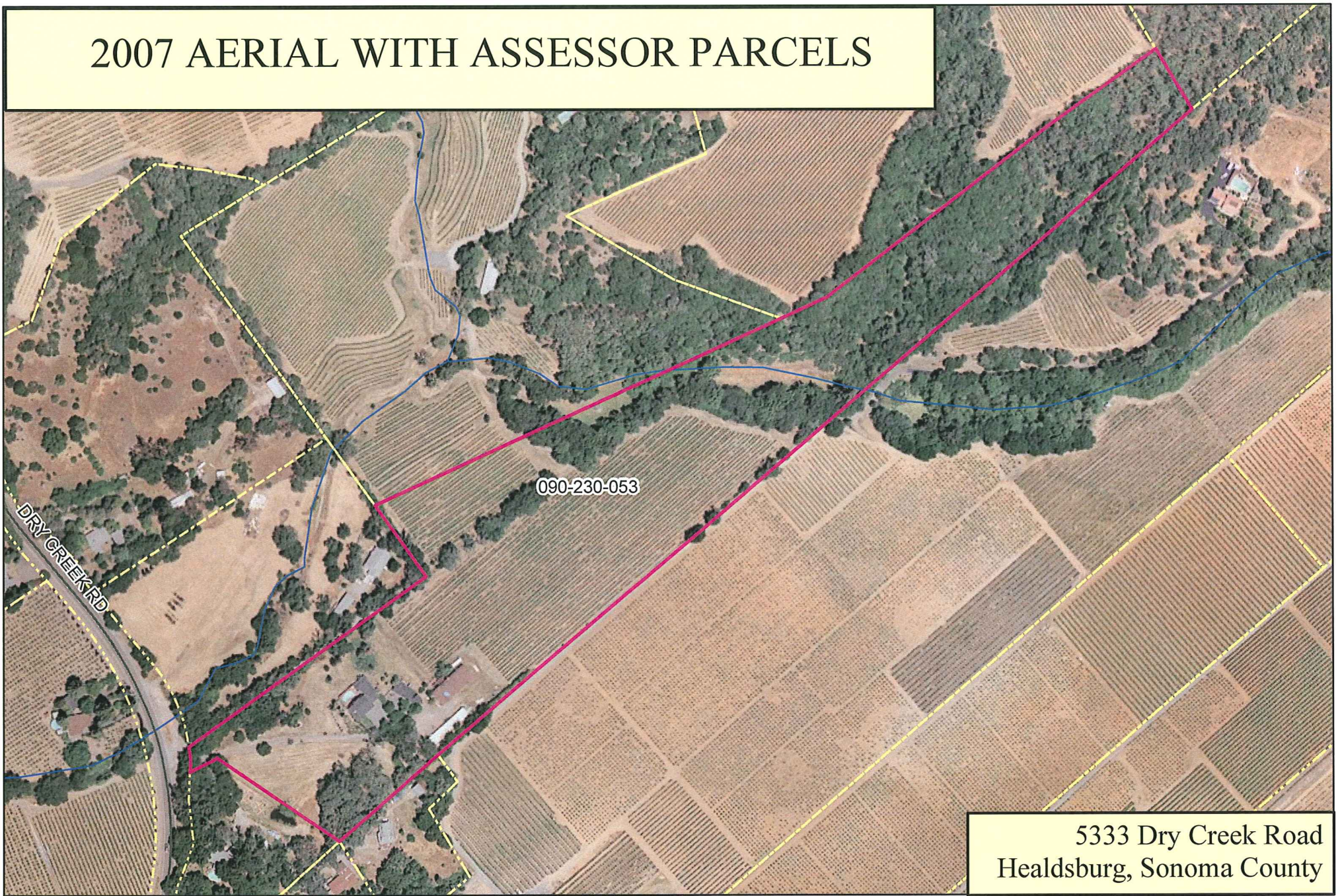
*ANY BOUNDARY SHOWN IS STRICTLY FOR REFERENCE PURPOSES ONLY. BOUNDARY LINES HAVE NOT BEEN VERIFIED AND/OR SURVEYED. NO LIABILITY IS ASSUMED OR IMPLIED FOR THE LOCATION OF BOUNDARY LINES OR THE ACCURACY OF ACREAGE FIGURES HEREON.*

*USE OF THIS PRODUCT IS COVERED BY COPYRIGHT LAWS, AND IS RESTRICTED TO THE SOLE USE OF OUR CLIENTS AND THEIR AGENTS.*

*RAY CARLSON & ASSOCIATES, INC. IS TO BE HELD HARMLESS FOR ANY AND ALL DISCREPANCIES OF DISTANCE AND GRAPHIC DISTORTION RELATING TO THE USE AND DEPENDENCE UPON THIS REPRESENTATION.*



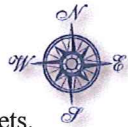
# 2007 AERIAL WITH ASSESSOR PARCELS



5333 Dry Creek Road  
Healdsburg, Sonoma County

2008-300

SOURCES:  
Parcel, stream and street data from County of Sonoma.  
Orthophotography by Digital Globe Inc, 2007.



0 300 600  
Feet

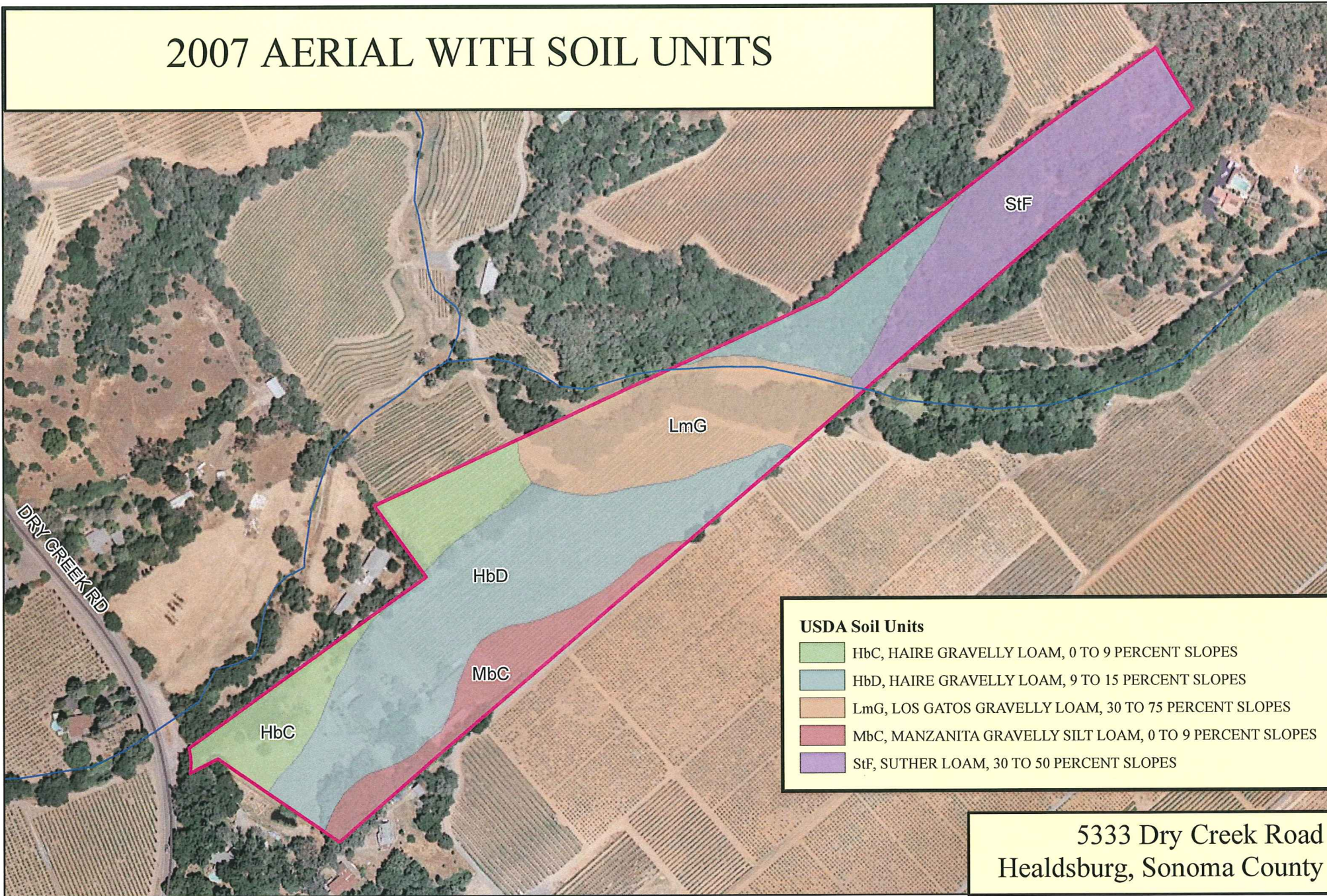
1 inch equals 300 feet



MAPPING A BETTER WORLD  
**Ray Carlson & Associates, Inc.**  
LAND SURVEYING  
411 Russell Ave Santa Rosa CA 95403  
707-528-7649 www.rcrmaps.com  
©2008 Ray Carlson & Associates, Inc.  
© April 9, 2008

NOTE: This map is an enlargement of smaller scale datasets.

# 2007 AERIAL WITH SOIL UNITS



5333 Dry Creek Road  
Healdsburg, Sonoma County

SOURCES:  
Parcel, stream and street data from County of Sonoma.  
Orthophotography by Digital Globe Inc, 2007.  
Soil data from USDA Natural Resources Conservation Service.



0 300 600 Feet

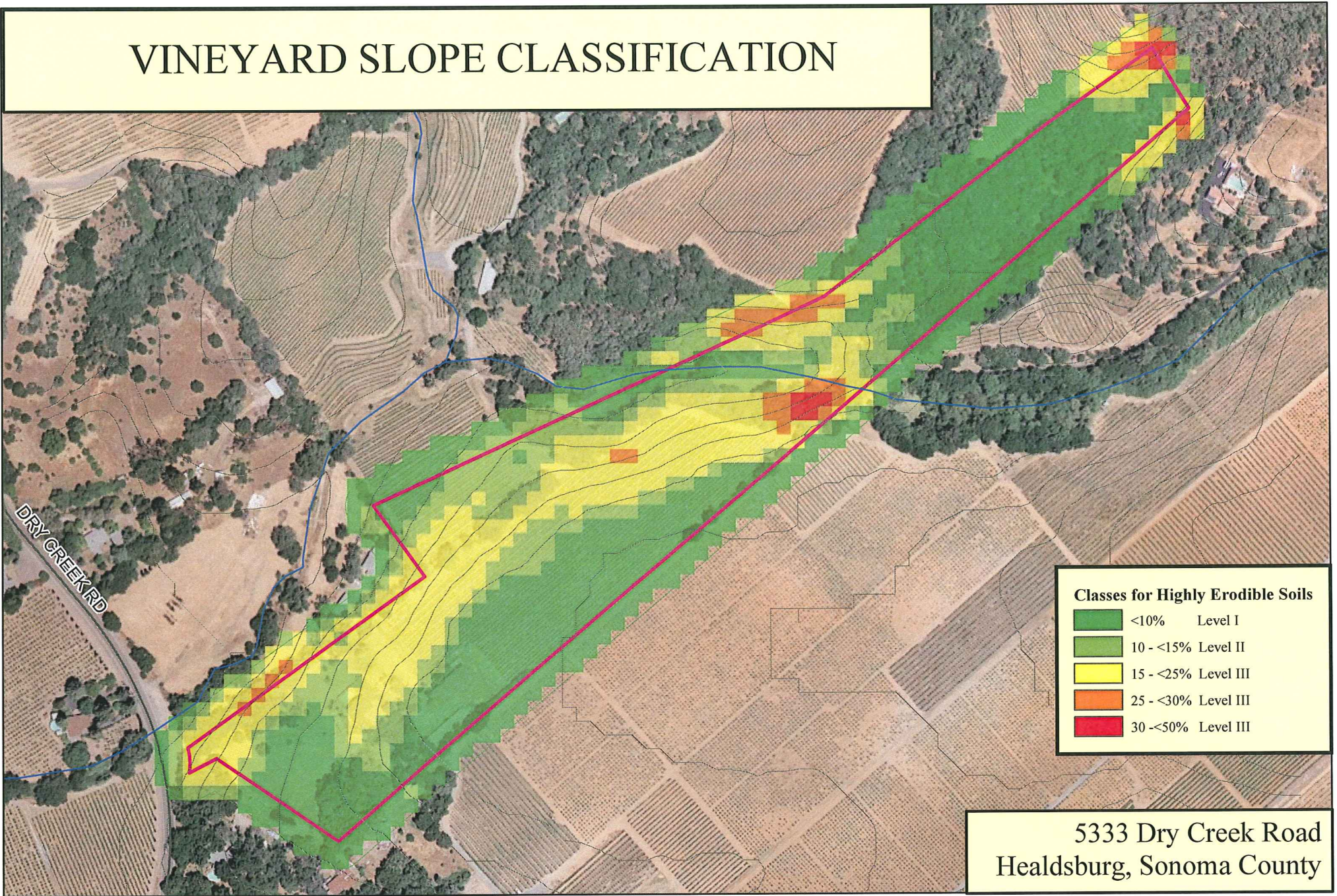
1 inch equals 300 feet



2008-300

NOTE: This map is an enlargement of smaller scale datasets.

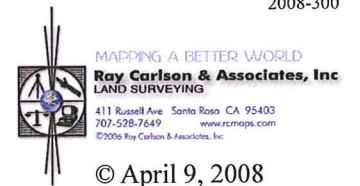
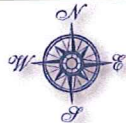
# VINEYARD SLOPE CLASSIFICATION



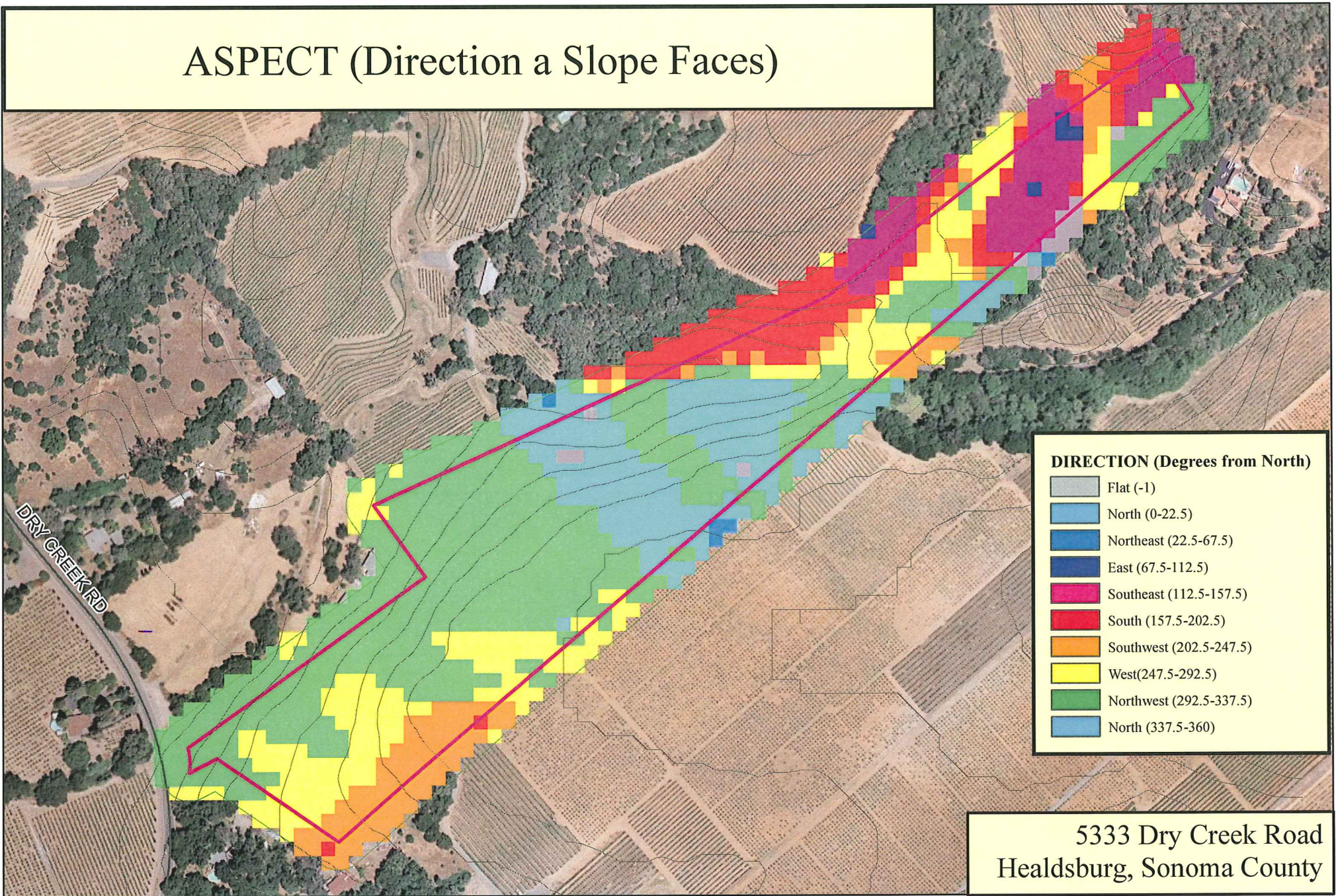
5333 Dry Creek Road  
Healdsburg, Sonoma County

2008-300

SOURCES:  
Parcel, stream and street data from County of Sonoma.  
Orthophotography by Digital Globe Inc, 2007.  
Slope analysis and 10-foot contours by Ray Carlson and Assocs,  
using USGS National Elevation Dataset from Image Peak Systems Corp.  
NOTE: This map is an enlargement of smaller scale datasets.



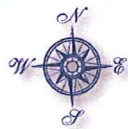
# ASPECT (Direction a Slope Faces)



5333 Dry Creek Road  
Healdsburg, Sonoma County

2008-300

**SOURCES:**  
 Parcel and street data from County of Sonoma.  
 Orthophotography by Digital Globe Inc, 2007.  
 Aspect analysis and 10-foot contours by Ray Carlson and Assocs,  
 using USGS National Elevation Dataset from Image Peak Systems Corp.  
**NOTE:** This map is an enlargement of smaller scale datasets.



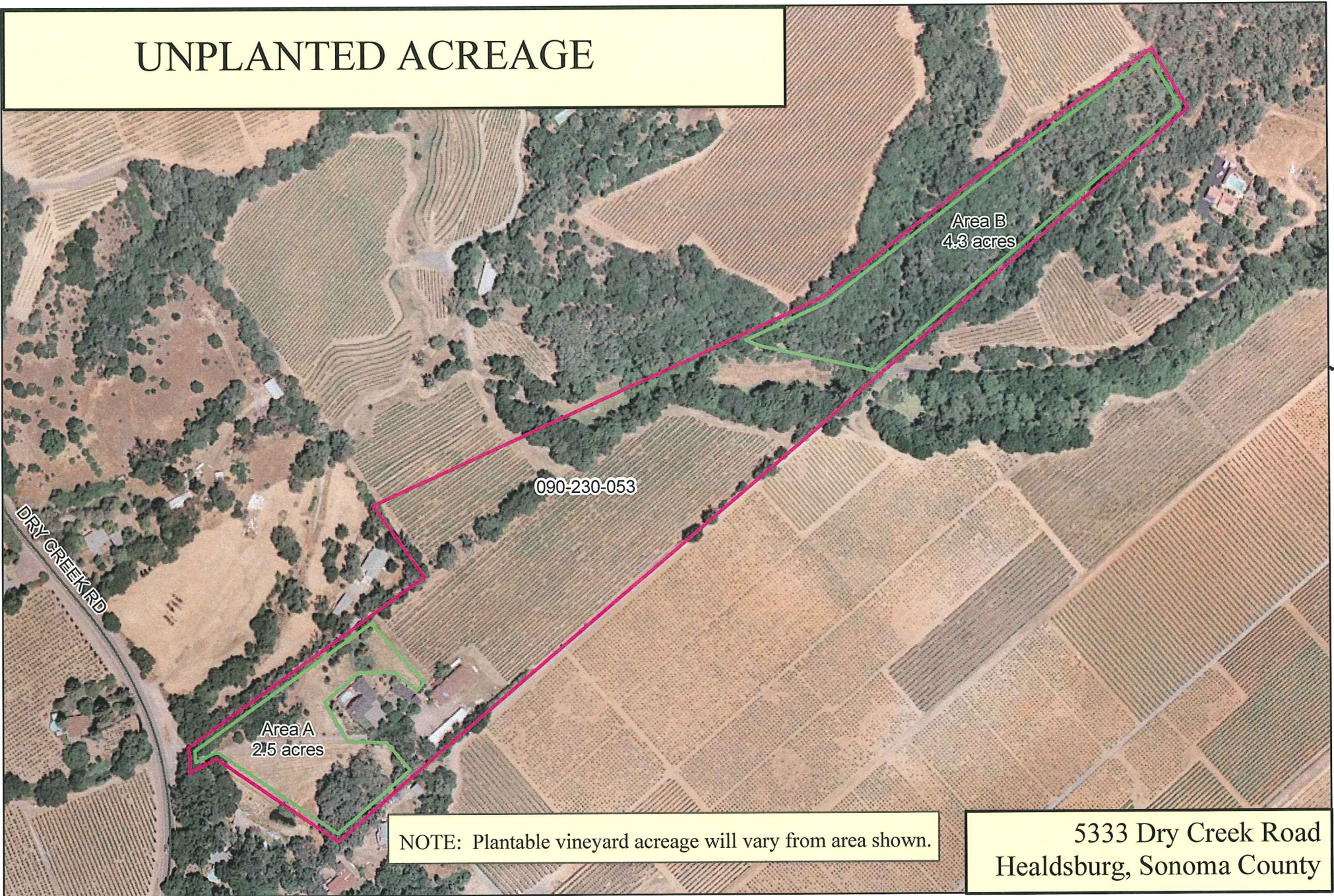
300 600 Feet  
 1 inch equals 300 feet



MAPPING A BETTER WORLD  
**Ray Carlson & Associates, Inc.**  
 LAND SURVEYING  
 411 Russell Ave Santa Rosa CA 95403  
 707-578-7649 www.rcrmaps.com  
 ©2008 Ray Carlson & Associates, Inc.

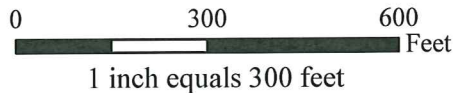
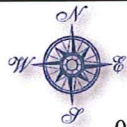
© April 9, 2008

# UNPLANTED ACREAGE



NOTE: Plantable vineyard acreage will vary from area shown.

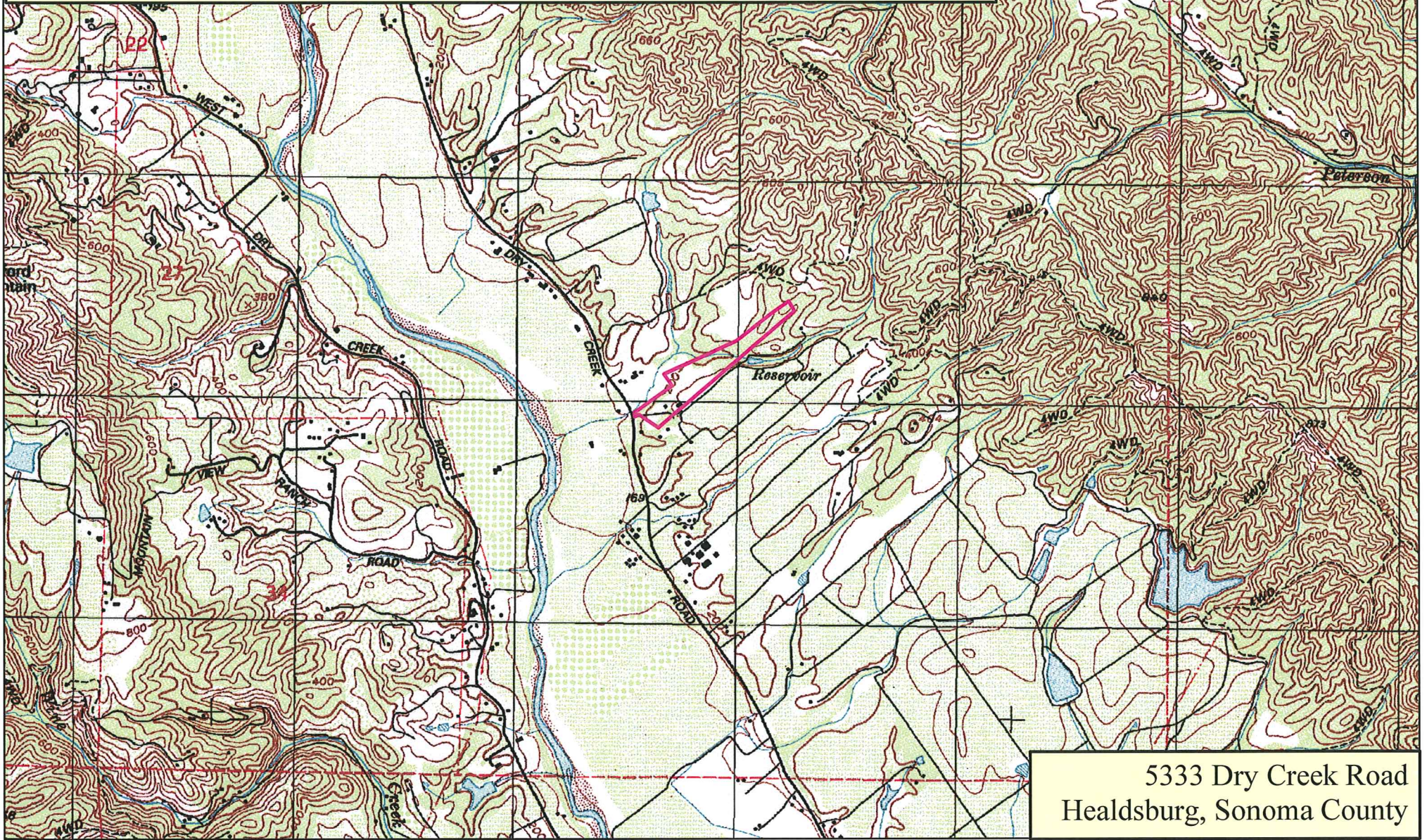
SOURCES:  
Parcel, stream and street data from County of Sonoma.  
Orthophotography by Digital Globe Inc, 2007.  
Acreage derived by Ray Carlson and Assocs, using ESRI software.  
NOTE: This map is an enlargement of smaller scale datasets.  
No liability is assumed or implied for the acreage figures hereon.



MAPPING A BETTER WORLD  
**Ray Carlson & Associates, Inc.**  
LAND SURVEYING  
411 Russell Ave Santa Rosa CA 95403  
707-578-7649 www.rcrmaps.com  
©2006 Ray Carlson & Associates, Inc.  
© April 9, 2008

# USGS TOPOGRAPHIC QUADRANGLE

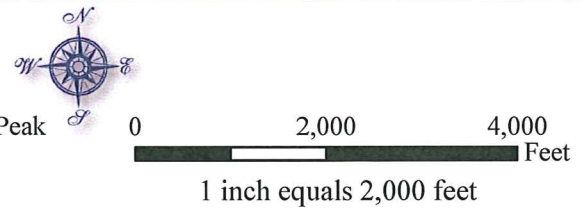
TZABACO RANCHO, TOWNSHIP 10N, RANGE 10W, MDM



5333 Dry Creek Road  
Healdsburg, Sonoma County

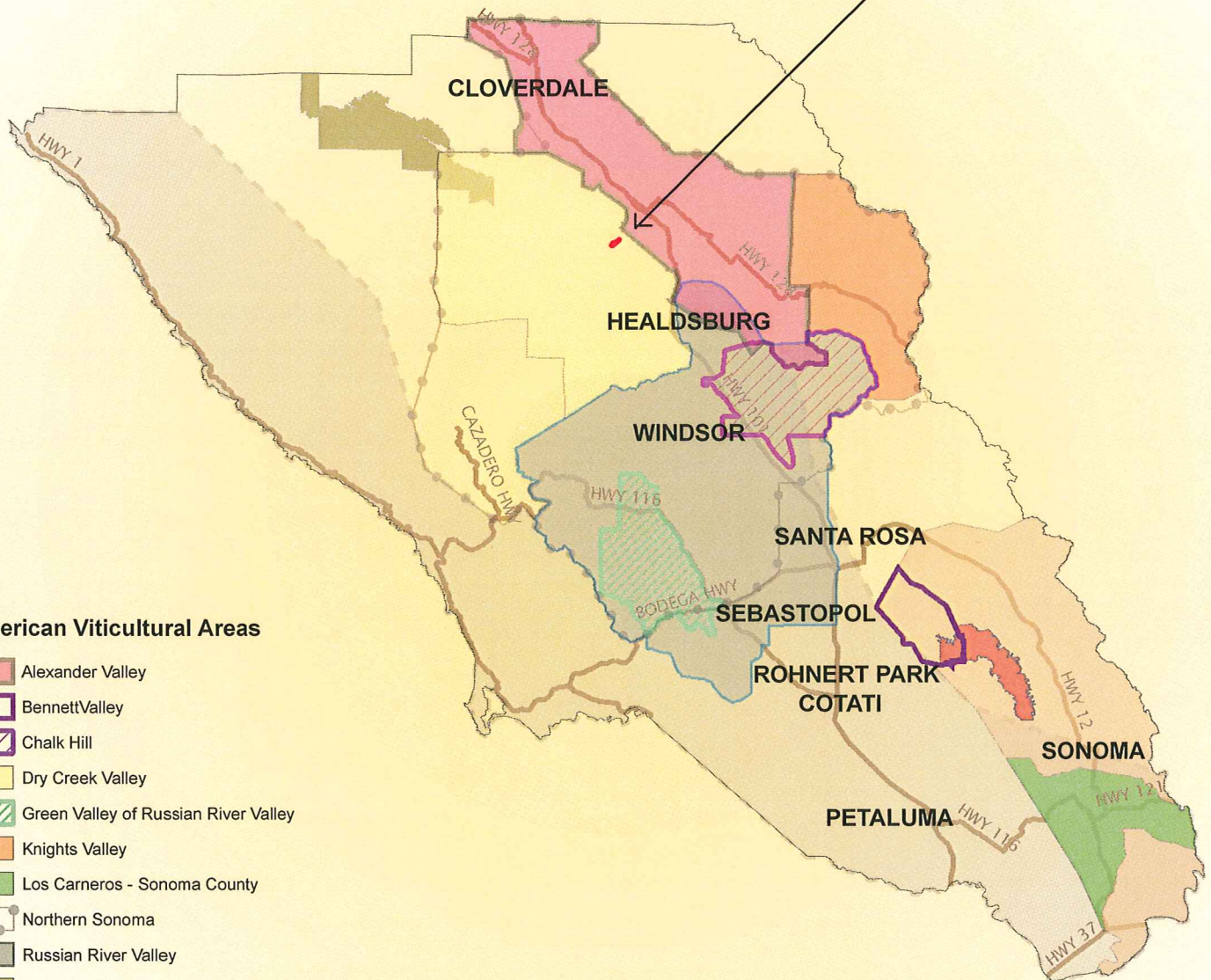
2008-300

SOURCES:  
Parcel data from County of Sonoma.  
USGS 7.5-minute quadrangle, GEYSERVILLE, from Image Peak Systems Corp.; 1997, 40-ft contours, 10-ft intermediate.



# Viticultural Areas for Sonoma County, CA

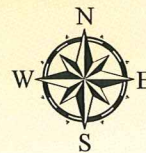
Property Located in These AVAs:  
 1. Dry Creek Valley  
 2. Northern Sonoma  
 3. North Coast



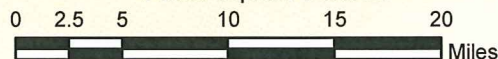
## American Viticultural Areas

-  Alexander Valley
-  Bennett Valley
-  Chalk Hill
-  Dry Creek Valley
-  Green Valley of Russian River Valley
-  Knights Valley
-  Los Carneros - Sonoma County
-  Northern Sonoma
-  Russian River Valley
-  Rockpile
-  Sonoma Coast
-  Sonoma Mountain
-  Sonoma Valley
-  Major Hwy

**SOURCES:**  
 Appellation boundaries by Ray Carlson & Associates, Inc.  
 City, county and road locations from County of Sonoma.



1 inch equals 9 miles



MAPPING A BETTER WORLD  
**Ray Carlson & Associates, Inc.**  
 LAND SURVEYING  
 411 Russell Ave. Santa Rosa, CA 95403  
 707-528-7649 www.rcnmaps.com  
 ©2006 Ray Carlson & Associates, Inc.

©2007

## LIST OF SOURCES

1. Digital Globe, Inc. **SONOMA-CA-1F-2007**. 2007. Copyrighted by Digital Globe, Inc., Phoenix, AZ, and used with permission. All imagery may be obtained through Digital Globe, Inc., Value Added Resellers, and the internet at <http://www.digitalglobe.com>. Maximum scale, 1:24,000; resolution, 1-foot pixels.

2. All data from the County of Sonoma are issued with Terms and Conditions of Use, including the following disclaimer notice:

"This information is derived from the County of Sonoma Enterprise GIS Database. The data are not a survey-quality product and the end user assumes the risk of utilizing it. The County of Sonoma does not assume any liability for damages arising from errors, omissions, or use of this information. End users are advised to be aware of the published accuracy, date, compilation methods, and cartographic format as described in the accompanying metadata, and are advised to utilize these data appropriately."

For additional information contact (707)565-3819 or visit <https://gis.sonoma-county.org/dataportal>

County of Sonoma. **Parcels**. Fall-Winter 2001, updated April 13, 2007. Maximum scale: 1:24,000.

A distinction should be made with respect to this layer which includes GIS parcels and the official Assessor Parcels residing in the Assessor Map books at the Sonoma County Assessor Office. For official parcel records please contact the Sonoma County Assessor (707)565-1888.

County of Sonoma GIS Central; also Santa Rosa, City of; Petaluma, City of; Rohnert Park, City of; Cotati, City of; and Merrick & Company, Aurora, Colorado. **STR\_STREETS**. 3/01 to 9/01. Maximum scale varies depending on location and source of data.

County of Sonoma. **HYD\_USGSSTRM**. Compiled by the Sonoma Ecology Center in 2003 for Sonoma County GIS. Maximum scale: 1:24,000.

3. Image Peak Systems Corp. **Geyserville, Calif., 7.5' quadrangle, US Geological Survey** (o38122f8). 1997. URL: <http://www.ImagePeak.com>. Maximum scale, 1:24,000; 40-foot contour interval with 10-foot intermediate contours.

4. Image Peak Systems Corp. **d38122 10-meter GRID**. Derived and reprojected from US Geological Survey DEM (digital elevation model), National Elevation Dataset. URL: <http://www.ImagePeak.com>. Maximum scale, 1:24,000.

Slope and aspect analyses use ESRI ArcGIS Spatial Analyst extension. A buffer area outside of the immediate area of interest is included to reduce edge-effect errors. Contours are generated using the same extension.

5. Ray Carlson & Associates, Inc. **Sonoma County Appellation Maps**. 2002-2007. Digitized according to the Code of Federal Regulations: 27 CFR part 9, American Viticultural Areas. URL: [http://www.ttb.gov/wine/wine\\_regs.shtml](http://www.ttb.gov/wine/wine_regs.shtml) (Alcohol and Tobacco Tax And Trade Bureau). For information about purchase and use of our AVA maps, contact (707)528-7649 or [wmoody@rcmaps.com](mailto:wmoody@rcmaps.com). Maximum scale: 1:24,000.
  
6. US Department of Agriculture, Natural Resources Conservation Service. **Soil Survey Geographic (SSURGO) database for Sonoma County, California**. December 13, 2006. URL: <http://SoilDataMart.nrcs.usda.gov/>. Maximum scale: 1:12,000. "Field investigations and data collection are carried out in sufficient detail to name map units and to identify accurately and consistently areas of about 5 acres."