

Geographic Information System Maps

Geographic Information System Maps

**Parcel 028-290-046
3408 Kings Hill Road, Santa Rosa
Sonoma County, California**

1. 2004 Aerial with Assessor Parcels
2. Soil Units with 2004 Aerial
3. Vineyard Slope Classification
4. Vineyard Slope Classes by Acres
5. Aspect with 2004 Aerial
6. USGS Topographic Quadrangle
7. Wine Appellations for Sonoma County

List of Sources

NOTE: THESE MAPS WERE CREATED BY RAY CARLSON & ASSOCIATES, INC. IN JULY 2007.

ANY BOUNDARY SHOWN IS STRICTLY FOR REFERENCE PURPOSES ONLY. BOUNDARY LINES HAVE NOT BEEN VERIFIED AND/OR SURVEYED.

USE OF THIS PRODUCT IS COVERED BY COPYRIGHT LAWS, AND IS RESTRICTED TO THE SOLE USE OF OUR CLIENTS AND THEIR AGENTS.

RAY CARLSON & ASSOCIATES, INC. IS TO BE HELD HARMLESS FOR ANY AND ALL DISCREPANCIES OF DISTANCE AND GRAPHIC DISTORTION RELATING TO THE USE AND DEPENDENCE UPON THIS REPRESENTATION.



2004 AERIAL WITH ASSESSOR PARCEL



SOURCES:
Parcel and street data from County of Sonoma.
Orthophotography by DigitalGlobe Inc, August 2004.



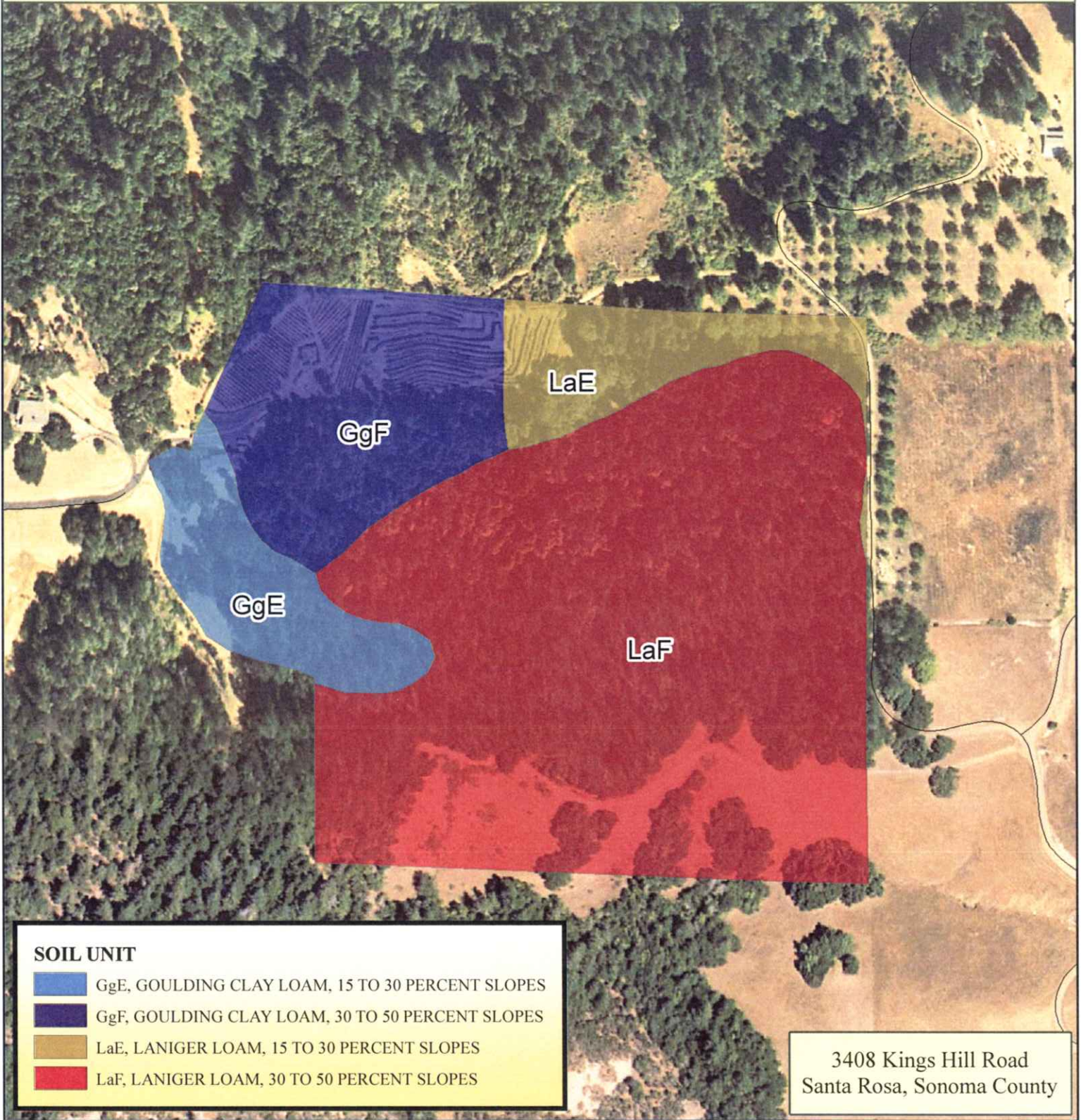
0 300 600 Feet
1 inch equals 300 feet







MAPPING A BETTER WORLD
Ray Carlson & Associates, Inc
LAND SURVEYING GIS PLANNING RESEARCH
411 Russell Ave Santa Rosa CA 95403
[707] 528-7649 Fax [707] 571-5541
<http://www.rcmaps.com>

©July 20, 2007

2004 AERIAL WITH SOIL UNITS



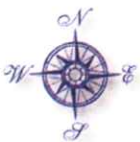
SOIL UNIT

-  GgE, GOULDING CLAY LOAM, 15 TO 30 PERCENT SLOPES
-  GgF, GOULDING CLAY LOAM, 30 TO 50 PERCENT SLOPES
-  LaE, LANIGER LOAM, 15 TO 30 PERCENT SLOPES
-  LaF, LANIGER LOAM, 30 TO 50 PERCENT SLOPES

3408 Kings Hill Road
Santa Rosa, Sonoma County

SOURCES:

Soil data from USDA Natural Resources Conservation Service.
Parcel and street data from County of Sonoma.
Orthophotography by DigitalGlobe Inc, August 2004.



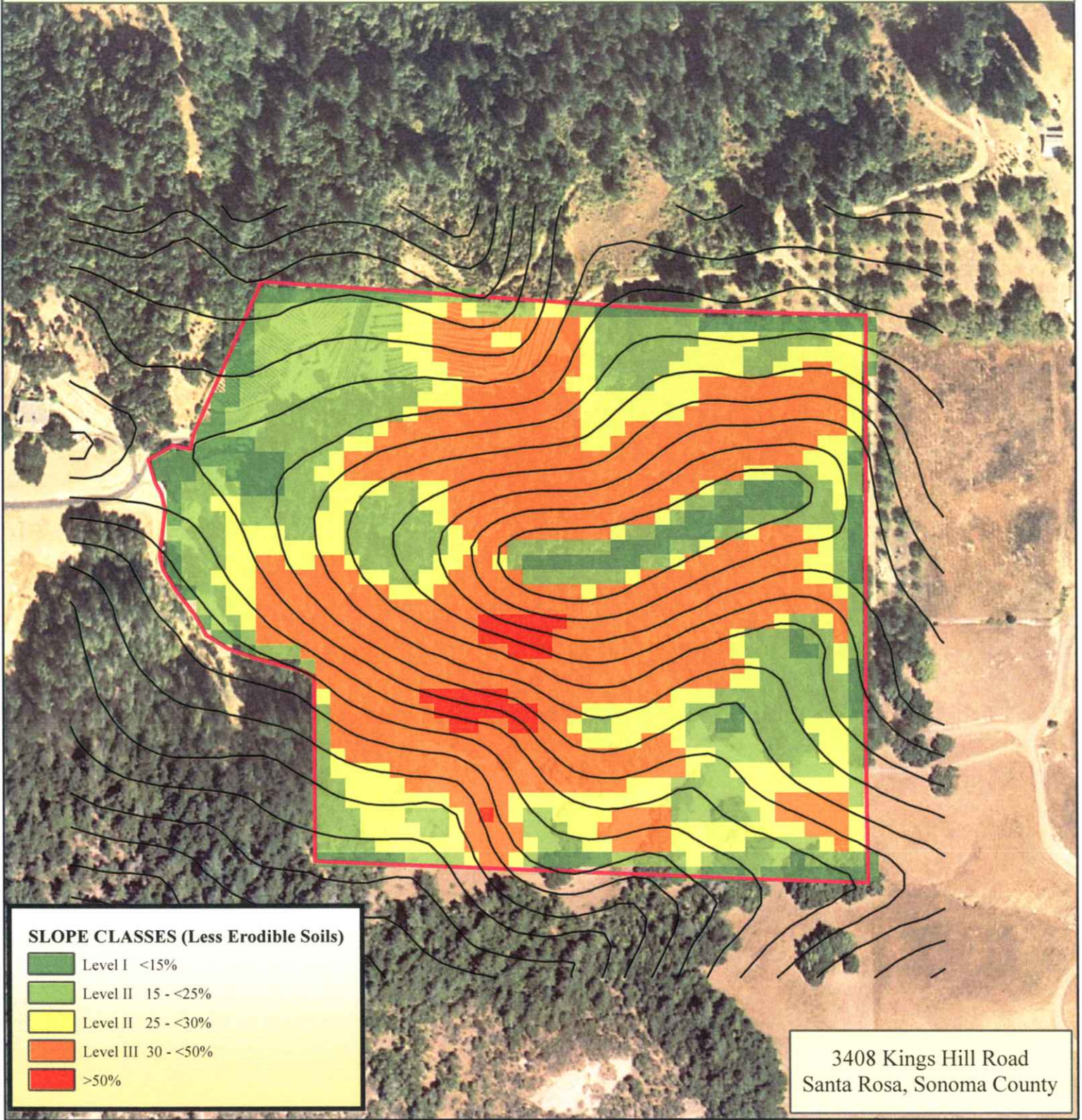
0 300 600 Feet
1 inch equals 300 feet



MAPPING A BETTER WORLD
Ray Carlson & Associates, Inc
LAND SURVEYING GIS PLANNING RESEARCH
411 Russell Ave Santa Rosa CA 95403
[707] 528-7649 Fax [707] 571-5541
<http://www.rcmaps.com>

©July 26, 2007

VINEYARD SLOPE CLASSIFICATION



SOURCES:
20-ft contours and slope analysis by Ray Carlson & Assocs, Inc. using
USGS National Elevation Dataset from Image Peak Systems Corp.
Parcel data from County of Sonoma.
Orthophotography by DigitalGlobe Inc, August 2004.



0 300 600
Feet

1 inch equals 300 feet

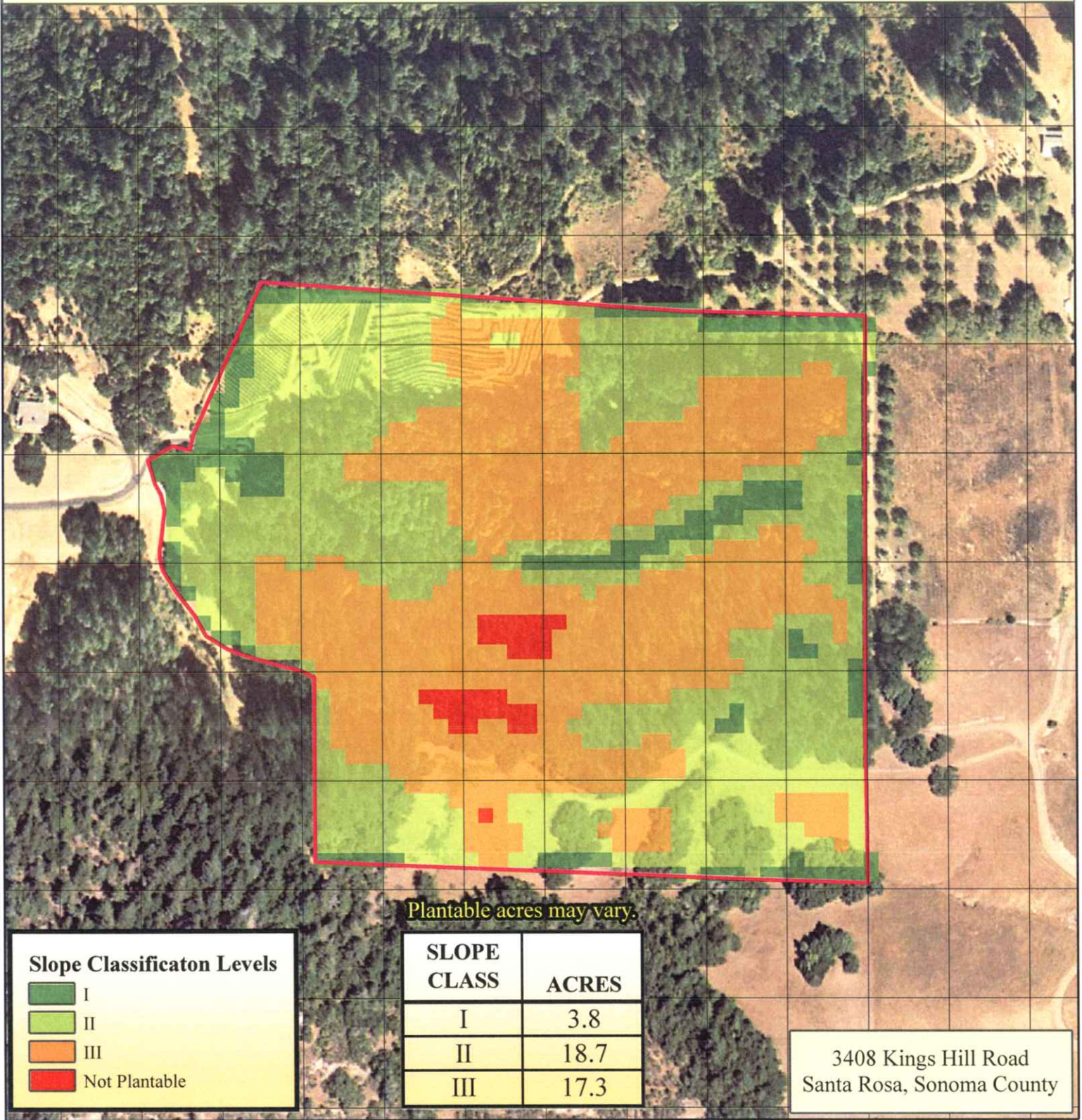


MAPPING A BETTER WORLD
Ray Carlson & Associates, Inc

LAND SURVEYING GIS PLANNING RESEARCH
411 Russell Ave Santa Rosa CA 95403
[707] 528-7649 Fax [707] 571-5541
<http://www.rcmaps.com>

©July 26, 2007

VINEYARD SLOPE CLASSES BY ACRES



SOURCES:
Slope analysis by Ray Carlson & Assocs, Inc, using
USGS National Elevation Dataset from Image Peak Systems Corp.
Parcel data from County of Sonoma.
Orthophotography by DigitalGlobe Inc, August 2004.



1 inch equals 300 feet

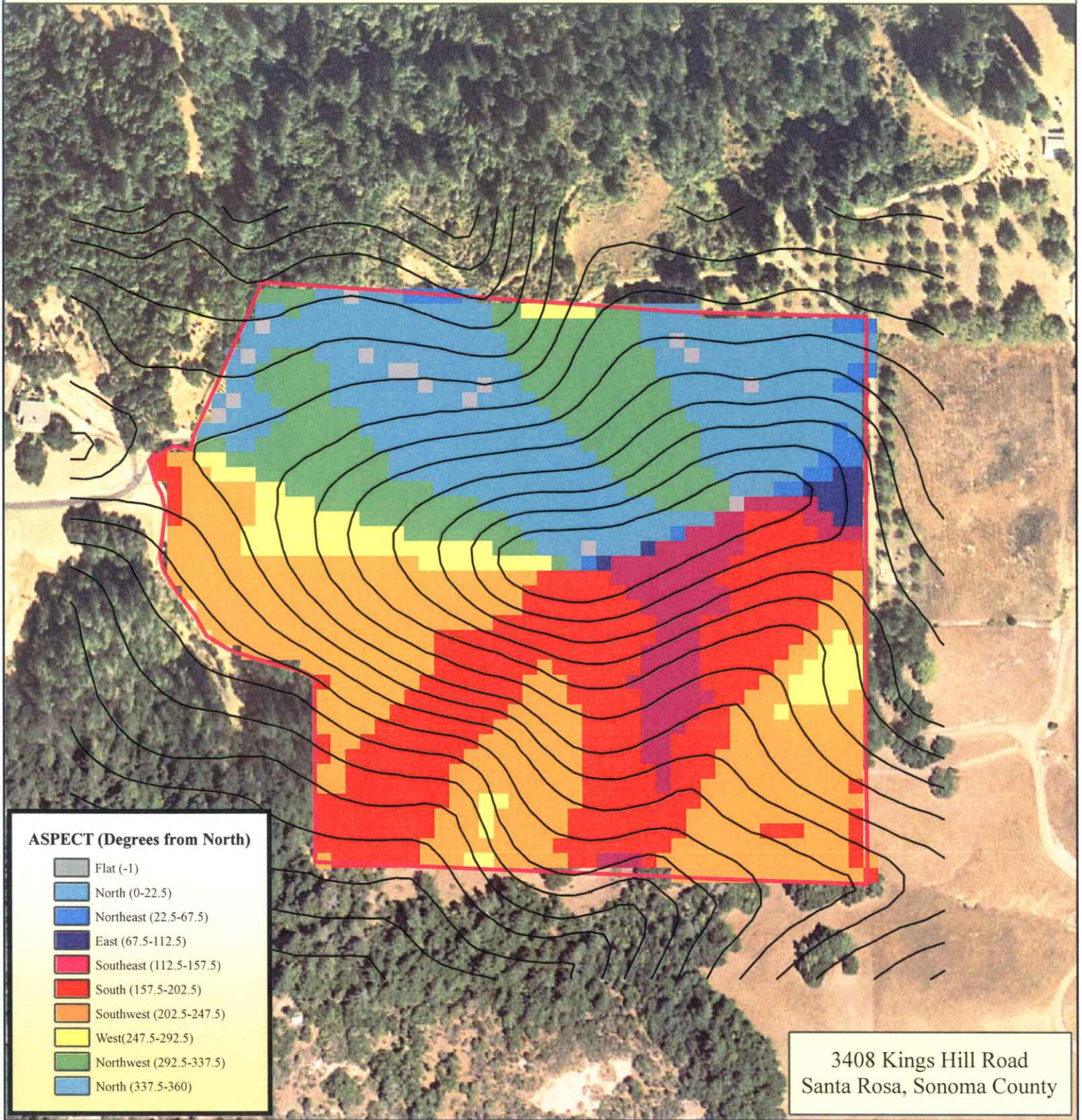
Grid: One-acre rectangles (180 x 242 ft)



MAPPING A BETTER WORLD
Ray Carlson & Associates, Inc
LAND SURVEYING GIS PLANNING RESEARCH
411 Russell Ave Santa Rosa CA 95403
[707] 528-7649 Fax [707] 571-5541
<http://www.rcmaps.com>

©July 26, 2007

ASPECT (The Direction a Slope Faces)



SOURCES:
20-ft contours and aspect analysis by Ray Carlson & Assocs, Inc, using
USGS National Elevation Dataset from Image Peak Systems Corp.
Parcel data from County of Sonoma.
Orthophotography by DigitalGlobe Inc, August 2004.



0 300 600
Feet

1 inch equals 300 feet

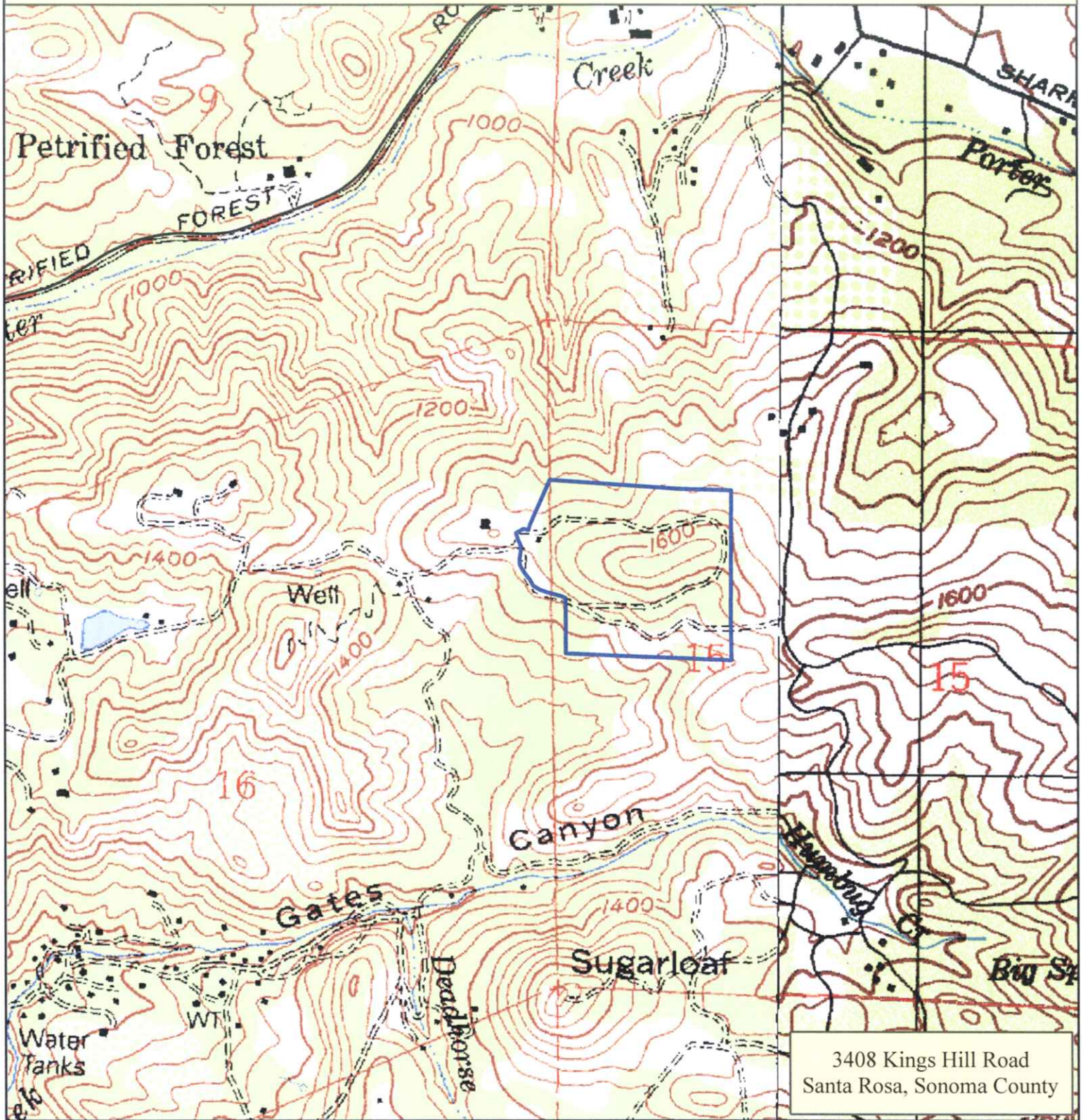


MAPPING A BETTER WORLD
Ray Carlson & Associates, Inc
LAND SURVEYING GIS PLANNING RESEARCH
411 Russell Ave Santa Rosa CA 95403
[707] 528-7649 Fax [707] 571-5541
<http://www.rcmaps.com>

©July 26, 2007

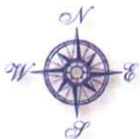
USGS TOPOGRAPHIC QUADRANGLE

SECTIONS 15 & 16, TOWNSHIP 8 NORTH, RANGE 7 WEST, MDM



3408 Kings Hill Road
Santa Rosa, Sonoma County

SOURCES:
USGS 7.5-minute quadrangles, Mark West Springs
and Calistoga, from Image Peak Systems Corp.
Parcel data from County of Sonoma.



1 inch equals 1,000 feet

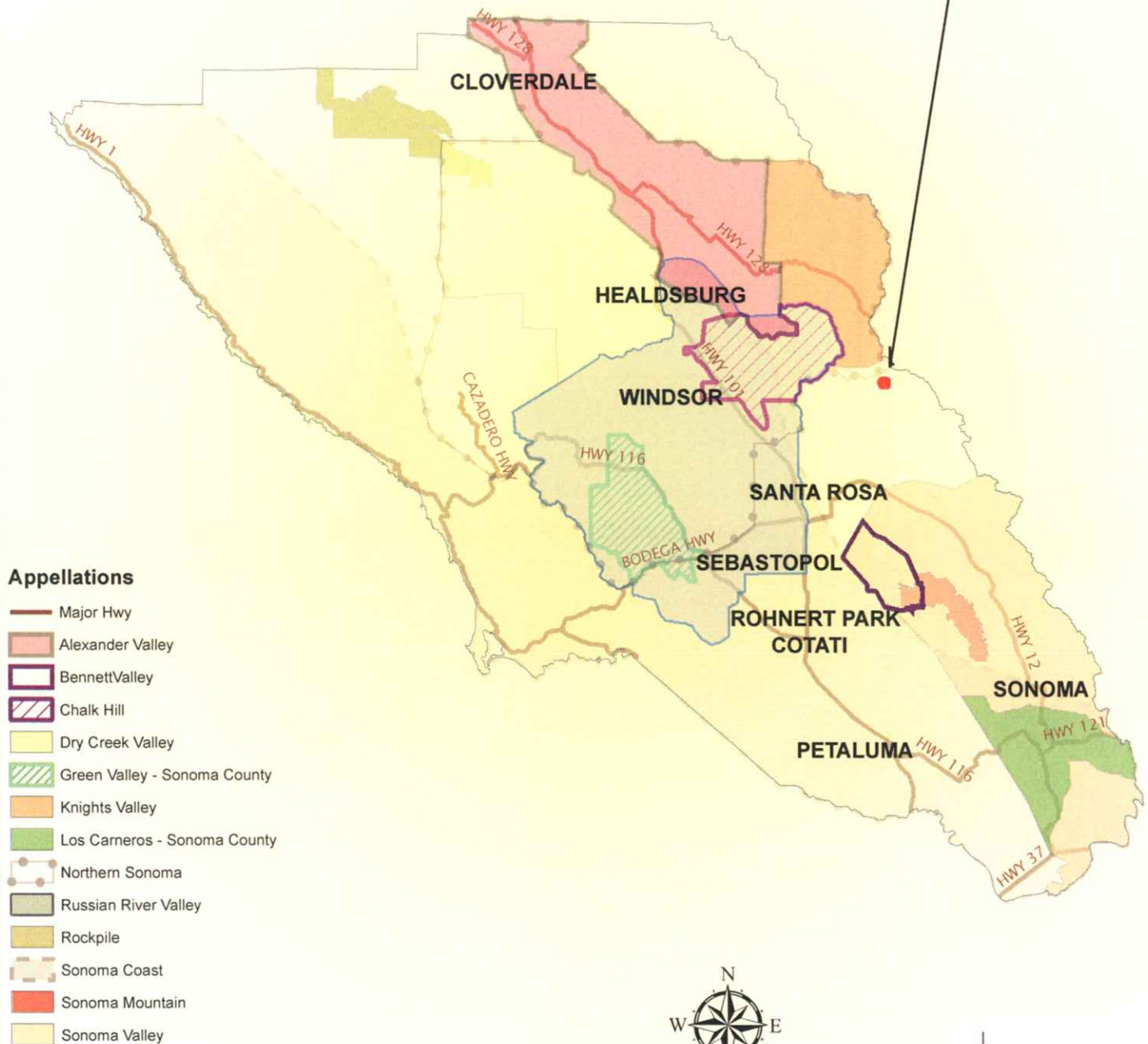


MAPPING A BETTER WORLD
Ray Carlson & Associates, Inc
LAND SURVEYING GIS PLANNING RESEARCH
411 Russell Ave Santa Rosa CA 95403
[707] 528-7649 Fax [707] 571-5541
<http://www.rcmaps.com>

©July 26, 2007

Wine Appellations for Kings Hill Road, Santa Rosa, CA

Property Located in
North Coast Appellation.

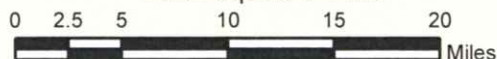


Appellations

- Major Hwy
- Alexander Valley
- Bennett Valley
- Chalk Hill
- Dry Creek Valley
- Green Valley - Sonoma County
- Knights Valley
- Los Carneros - Sonoma County
- Northern Sonoma
- Russian River Valley
- Rockpile
- Sonoma Coast
- Sonoma Mountain
- Sonoma Valley



1 inch equals 9 miles



SOURCES:
Appellation boundaries by Ray Carlson & Associates, Inc.
City, county and road locations from County of Sonoma.



LIST OF SOURCES

1. Digital Globe, Inc. **Sonoma-Mendocino-2f-0804-2522**. August 2004. Copyrighted by Digital Globe, Inc., Phoenix, AZ, and used with permission. All imagery may be obtained through Digital Globe, Inc, Value Added Resellers, and the internet at <http://www.digitalglobe.com>. Maximum scale, 1:24,000; resolution, 2-foot pixels.

2. All data from the County of Sonoma are issued with Terms and Conditions of Use, including the following disclaimer notice:

"This information is derived from the County of Sonoma Enterprise GIS Database. The data are not a survey-quality product and the end user assumes the risk of utilizing it. The County of Sonoma does not assume any liability for damages arising from errors, omissions, or use of this information. End users are advised to be aware of the published accuracy, date, compilation methods, and cartographic format as described in the accompanying metadata, and are advised to utilize these data appropriately."

For additional information contact (707)565-3819 or visit <https://gis.sonoma-county.org/dataportal>

County of Sonoma. **Parcels**. Fall-Winter 2001, updated December 15, 2006. Maximum scale: 1:24,000.

A distinction should be made with respect to this layer which includes GIS parcels and the official Assessor Parcels residing in the Assessor Map books at the Sonoma County Assessor Office. For official parcel records please contact the Sonoma County Assessor (707)565-1888.

County of Sonoma GIS Central; also Santa Rosa, City of; Petaluma, City of; Rohnert Park, City of; Cotati, City of; and Merrick & Company, Aurora, Colorado. **STR_STREETS**. 3/01 to 9/01. Maximum scale varies depending on location and source of data.

County of Sonoma, Permit and Resource Management Department. **PRMD_CITYLIMIT**. July 31, 2006. No maximum scale specified; assume 1:24,000.

County of Sonoma. **SCGISDB2_BASE_ADM_BAYAREA** (County Boundaries). January 2003. Maximum scale: 1:24,000.

3. Image Peak Systems Corp. **Mark West Springs, Calif., 7.5' quadrangle, US Geological Survey** (o38122e6), 1992; and **Calistoga, Calif., 7.5' quadrangle, US Geological Survey** (o38122e5), 1997. URL: <http://www.ImagePeak.com>. Maximum scale, 1:24,000; 40-foot contour interval.

4. Image Peak Systems Corp. **d38122 10-meter GRID**. Derived and reprojected from US Geological Survey DEM (digital elevation model), National Elevation Dataset. URL: <http://www.ImagePeak.com>. Maximum scale, 1:24,000.

5. Ray Carlson & Associates, Inc. **Sonoma County Appellation Maps**. 2002-2007. Digitized according to the Code of Federal Regulations: 27 CFR part 9, American Viticultural Areas. URL: http://www.ttb.gov/wine/wine_regs.shtml (Alcohol and Tobacco Tax And Trade Bureau). For information about purchase and use of our AVA maps, contact (707)528-7649 or wmoody@rcmaps.com. Maximum scale: 1:24,000.

6. US Department of Agriculture, Natural Resources Conservation Service. **Soil Survey Geographic (SSURGO) database for Sonoma County, California**. December 13, 2006. URL: <http://SoilDataMart.nrcs.usda.gov/>. Maximum scale: 1:12,000. "Field investigations and data collection are carried out in sufficient detail to name map units and to identify accurately and consistently areas of about 5 acres."